



Shredding & Recycling

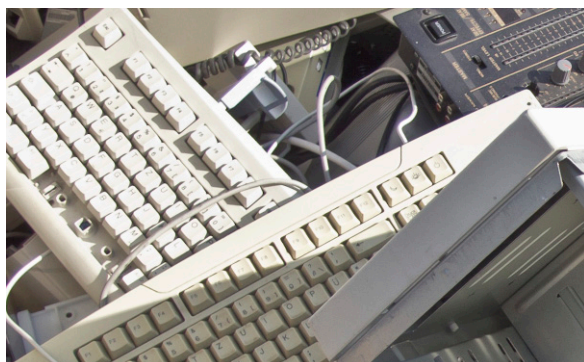
Shredding operations associated with recycling are dirty and dangerous even when all goes right. But smoke emissions, dust and damaging explosions have long come with the territory, making the propensity for things to go wrong too high. With Midwest behind you, you can reduce the frequency and velocity of explosions by 50% to 80% while also taking control of blue smoke, dust, health, safety and regulatory concerns.



Holding things together while you shred them apart

The business of shredding can take a heavy toll on people, equipment, and the environment. You already know that. So does Midwest.

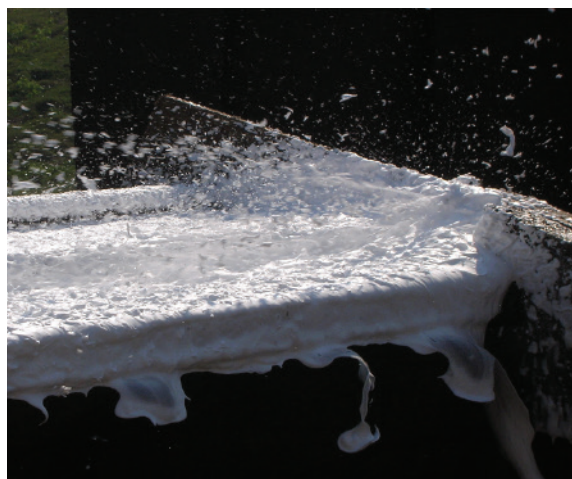
We've been helping shredding businesses from Ontario to Florida, Texas to Vancouver, and dozens of points in between resolve air-quality issues that are as inherent in the shredding business as noise. Clients rely on Midwest because we solve problems others can't.



Proven effective for more than a decade

Midwest's Dust-Buster® dust suppression systems for recycling operations have changed the way shredding companies operate. They are manufactured to withstand the harsh environment in which they work and do not require high-maintenance or cumbersome water filtering.

Our foam agents, created by our own chemists in our own lab reduce the damage that dust can do to workers' respiratory systems and your valuable equipment. They permeate the area where explosive gases can accumulate, reducing the intensity and velocity of shredder explosions. And they do a good job ensuring compliance with state and local air permits.



Foam is:
Environmentally safe
Biodegradable
Non-hazardous
Reasonably priced
VOC- and solvent-free
Easily diluted

Foam Versus Water

In deciding whether to use foam as part of the shredding process, it makes sense to compare it to water. Among the benefits of foam are that it:

- Reduces dust emissions by up to 85%
- Decreases disposal costs by lightening residual waste by 60%-90%
- Contains blue smoke
- Does not release dust downstream at transfer points
- Will not affect picking process
- When watering is only available treatment, requires a small fraction of typically-needed supply
- Produces less mud around your shredder



A side by side comparison.

Pictured above, left, a water droplet that because of its high surface tension cannot, penetrate and coat dust particles. On the right, Midwest's foam agent which, with its low surface tension, can easily capture and blanket dust particles so they do not become a cloud of airborne dust.

"Safety First" is more than an adage

At Midwest, safety is a pillar of our culture. It affects the products we manufacture, the expectations we set, and the decisions we make both at Midwest and at customer sites. Wherever in the world our customers take us, we bring with us our own strong safety presence and fully participate in their safety programs and procedures.



Midwest operates day to day on the idealistic premise that all accidents are preventable and that it is our responsibility as a company and as individuals to eliminate and control both known and potential safety and health hazards.

It's easy to be green

As tough as Midwest's products are at preventing and controlling dust, they are safe for human, animal and plant life. With chemists in our lab and experts on our customers' worksites, Midwest has the home-grown ability to manufacture products that will not harm the environment and, in many instances, will help it. Our chemists think green from source materials to formulation and from production to application.



More reasons to choose Midwest

Midwest is the world leader in environmentally sound, dust-control technology for every application where fugitive dust is a problem. We bring our customers more solutions, documentation and support than any other manufacturer. On a daily basis, we challenge ourselves to become even more accessible problem-solvers so we can set a new industry standard for proactive and responsive service. Pushing the envelope is part of our corporate DNA, and we strive, always, to develop cutting-edge processes, products and services; stay on top of the learning curve, and educate our customers for our mutual success.

Midwest Industrial Supply, Inc.
1101 3rd Street Southeast
Canton, Ohio 44707
www.midwestind.com

Tel 330.456.3121
Fax 330.456.3247
Toll Free 1.800.321.0699

B166 ©2015 Midwest Industrial Supply, Inc.

