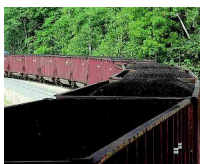


SoLong[®]: Technical Information

Residual
Dust
Control

DESCRIPTION



SoLong is a polymer-based emulsion in an easy-to-apply liquid form which provides both short and long term dust suppression when loading and transporting railroad ballast.

BENEFITS AND PERFORMANCE



SoLong is used where PM10 and Total Suspended Particles must be suppressed at the source and maintained for downstream effectiveness as bulk materials such as coal, coke, limestone, sand and sinter are loaded, unloaded, stockpiled and reclaimed. SoLong from a single application point will eliminate the need for further dust suppression in the handling process while minimizing spray equipment needs and reducing water use. It provides residual dust suppression by binding the fine particles and holding them together even after the material has dried. It will not interfere with the processing or combustion of treated materials. SoLong helps meet particulate air quality standards.

APPLICATIONS



SoLong is mixed with water at 100 parts water to 1 part SoLong mix ratio. Application rates will vary depending upon material being treated and objective of application. Exact applications and dilutions will be determined by your technical representative.

PHYSICAL PROPERTIES

General Appearance:	Milky white liquid
Specific Gravity:	1.01 - 1.15
Density:	8.4 - 9.5 lbs/gal
pH:	4 - 7