

# 14 YEAR CUSTOMER SPOTLIGHT: INDUSTRIAL FACILITY

## Maintaining 100% Air Quality Compliance through Midwest's Fully Managed Service Program

<p><b>&lt;9%</b></p> <p>Average opacity maintained based on Visible Emission Observations</p>	<p><b>14</b></p> <p>of the 16 areas were converted to EnviroKleen® based on a successful trial</p>	<p><b>100%</b></p> <p>Compliance with Air Quality Permits</p>
---	--	---

### CHALLENGES

- Maintain the facility's compliance with strict US EPA emissions standards at a large and dynamic industrial site.
- Manage the variable surface compositions, operational patterns, and dust sources.
- Reduce dust emissions on both unpaved and paved areas while minimizing overall chemical usage.
- Develop a long term, scalable program capable of evolving with traffic fluctuations and site specific constraints.

### SOLUTION

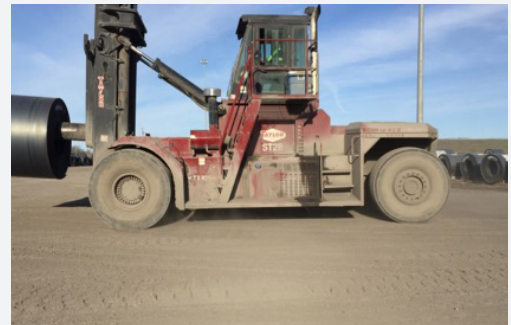
- Developed and launched a multi-year managed service program focused on long-term sustainable performance rather than temporary fixes.
- Transition from a multi-chemistry approach to predominately using EnviroKleen® based on strong results from a trial.
- Performed routine VEO opacity evaluations, silt load sampling, and ongoing data analysis to ensure compliance and optimize application schedules.
- Added water flushing and sweeping of the paved roads to meet the facilities permit to operate.

### RESULTS

- **Multi-Year Sustained Dust Reduction:** Visible Emissions Observations demonstrate that unpaved areas consistently maintained average visual opacity levels below 9%.
- **Successful Transition to EnviroKleen®:** Based on the success of a trial, 14 of the 16 treated areas were transitioned to EnviroKleen®.
- **100% Air Quality Permit Compliance:** The facility met all air quality compliance requirements during the five-year program.

### LOOKING FORWARD

This project demonstrated that a program-based strategy delivers substantial, measurable, and sustainable reductions in dust emissions – even within complex and dynamic industrial environments. Implementing a managed service program allowed the customer to focus on operations and productivity while Midwest handled all dust-related activities from product application, documentation, and reporting. Facilities facing strict regulatory pressures now have a validated pathway to long term compliance, cost savings, and environmental stewardship.



### PROJECT SUMMARY

**Location:** Midwest US

**Industry:** Industrial and Manufacturing

**Customer:** Industrial Facility

The industrial facility partnered with Midwest to establish a comprehensive, multi year Dust Control Program designed to meet the strict U.S. EPA fugitive dust requirements. Over five years, Midwest implemented a strategic, Managed Service program centered on consistent performance monitoring, multi-chemistry application, and continuous optimization.

The program began as a hybrid system using a combination of dust control chemistries, later transitioning toward EnviroKleen® after highly successful trials demonstrated improved performance, reduced chemical usage, and enhanced operational efficiency. Routine VEO and silt load monitoring confirmed significant reductions in airborne particulate and roadway silt buildup, resulting in continual air quality compliance and strengthened environmental stewardship.

This project confirmed the Midwest Managed Service Program's ability to deliver substantial, measurable, and sustainable reductions in dust emissions resulting in long-term compliance, cost savings and environmental stewardship.